

DIRTY BUTTER - HERITAGE HILLS EXTENSION

An Addition to the City of Tulsa,
 Located in a Part of the NE/4 of the SW/4 of Section 25
 T-20-N, R-12-E Tulsa County, State of Oklahoma



LOT 1, BLOCK 2
 1980 N. Hartford Ave. E.

21,932 sq ft

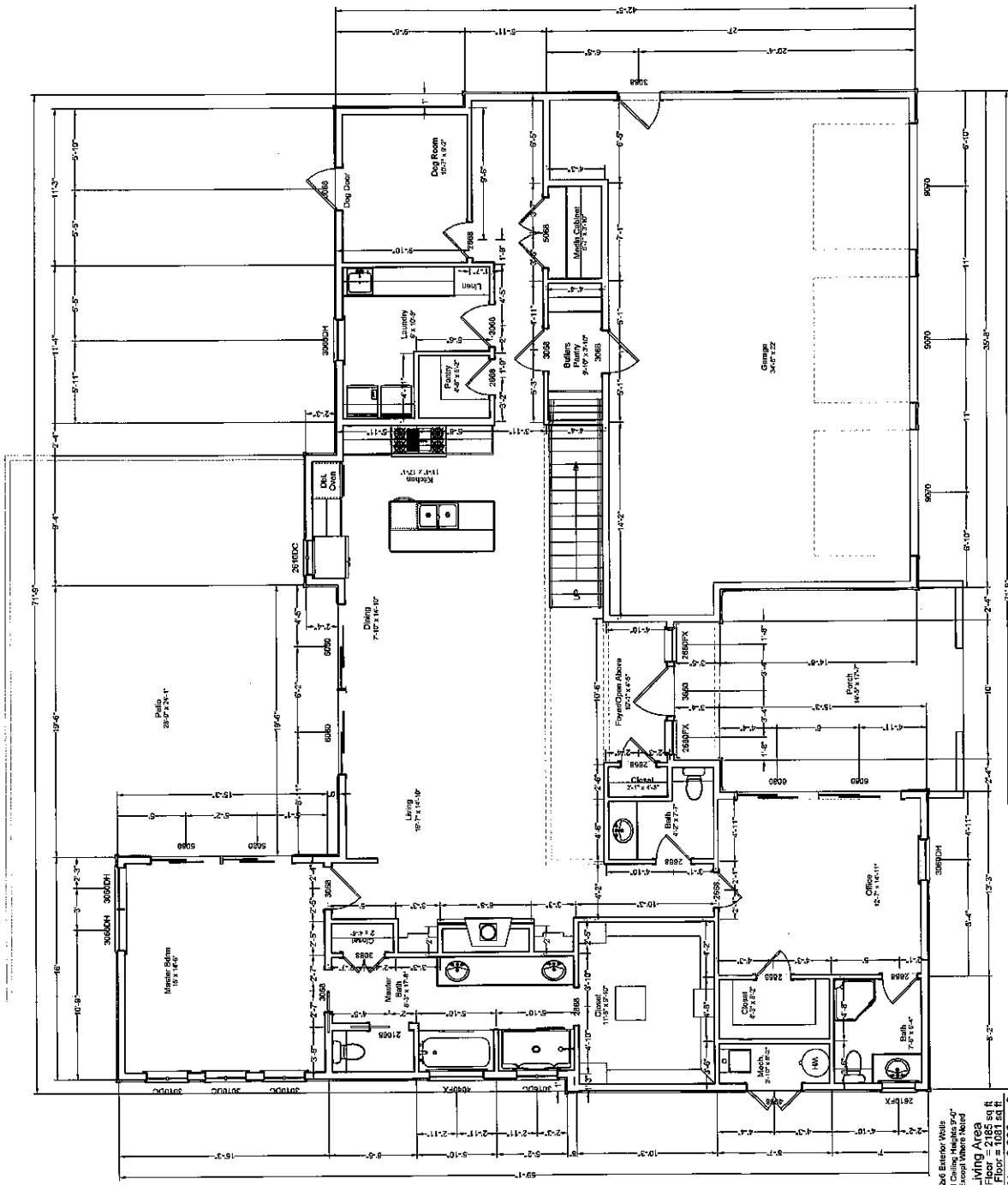
DATE	BY	SCALE
12-15-11	RS	1/8" = 1'-0"

PROJECT	NO.	DATE
PLAN 3266	9	12-15-11

TITLE
 3 BDRM + OFFICE HOME
 SITE PLAN

PROJECT
 The
 "ROBERTS"
 Home

KB ENTERPRISE HOMES
 1842 E. 50th Pl. SE, TULSA, OK, USA
 918.481.9000



2x6 Exterior Walls
 All Chilling Heights 9'4"
 Except Where Noted
 Living Area
 1st Floor = 2185 sq ft
 2nd Floor = 2185 sq ft
TOTAL = 4370 sq ft

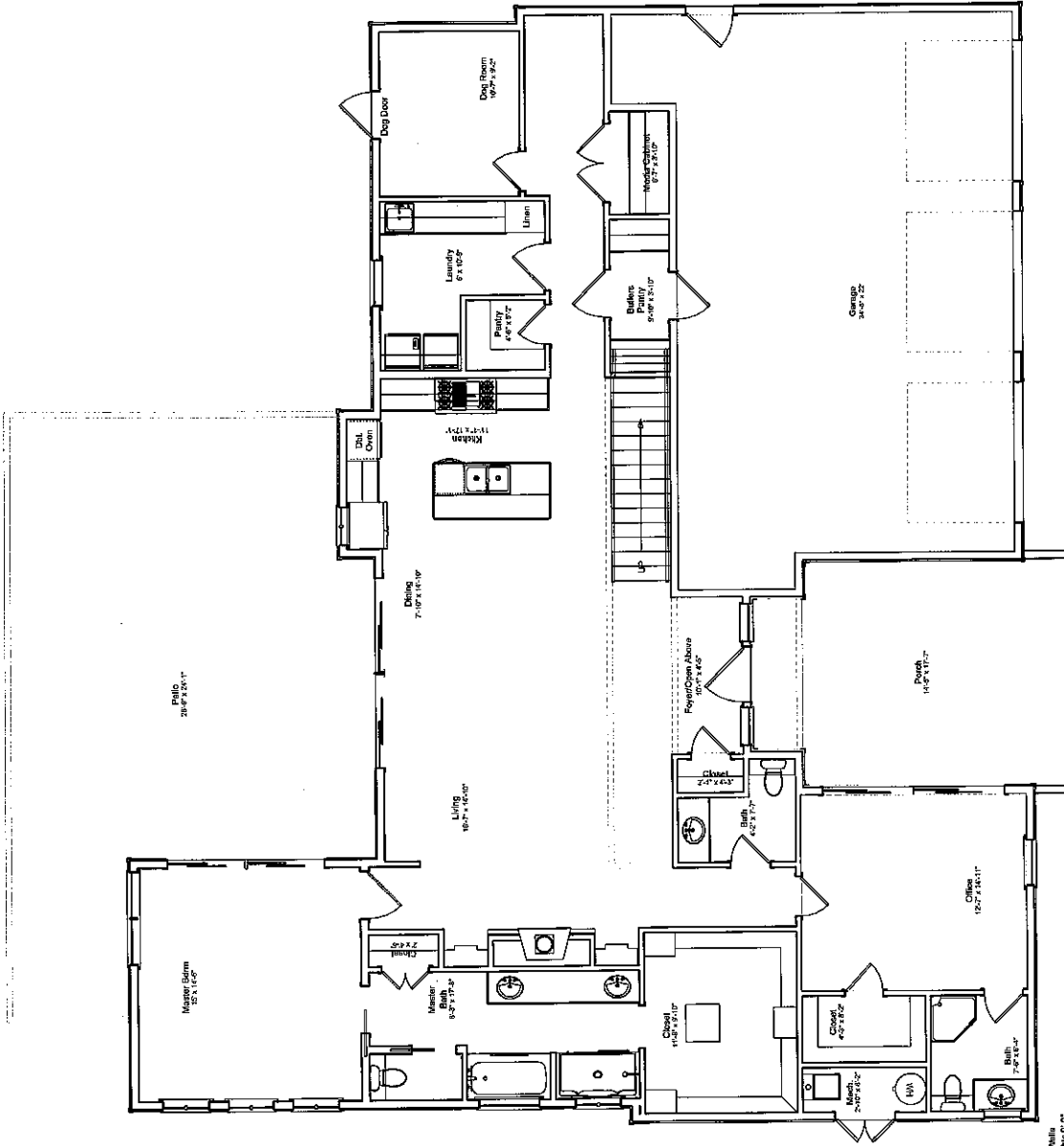
DATE	11/20/17
BY	11/20/17
CHECKED BY	11/20/17
SCALE	1/4"=1'-0"

PROJECT	PLAN 3266 3 BDRM + OFFICE HOME 1st FLOOR PLAN
---------	---

PROJECT
 "ROBERTS"
 Home

PROJECT
 "ROBERTS"
 Home

KB ENTERPRISE HOMES
 1842 E. 52nd Pl., E. Tulsa, OK 74154
 918.481.0600
 kb@kbenterprisehomes.com



2x6 Exterior Walls
 All Ceiling Heights 8'-0"
 Except Where Noted

LIVING AREA
 1st Floor = 1,081 sq ft
 2nd Floor = 1,081 sq ft
TOTAL = 3,266 sq ft

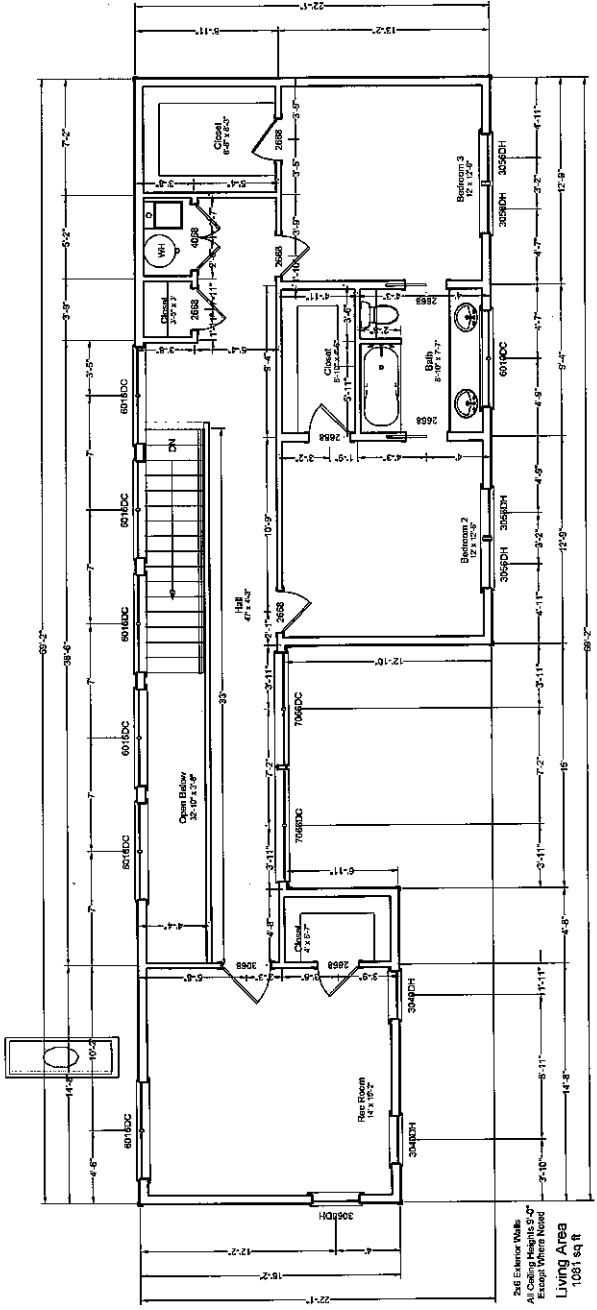
DATE	DESCRIPTION
11/11/11	1st Floor
11/11/11	2nd Floor
11/11/11	3rd Floor
11/11/11	4th Floor
11/11/11	5th Floor
11/11/11	6th Floor
11/11/11	7th Floor
11/11/11	8th Floor
11/11/11	9th Floor
11/11/11	10th Floor
11/11/11	11th Floor
11/11/11	12th Floor
11/11/11	13th Floor
11/11/11	14th Floor
11/11/11	15th Floor
11/11/11	16th Floor
11/11/11	17th Floor
11/11/11	18th Floor
11/11/11	19th Floor
11/11/11	20th Floor
11/11/11	21st Floor
11/11/11	22nd Floor
11/11/11	23rd Floor
11/11/11	24th Floor
11/11/11	25th Floor
11/11/11	26th Floor
11/11/11	27th Floor
11/11/11	28th Floor
11/11/11	29th Floor
11/11/11	30th Floor
11/11/11	31st Floor
11/11/11	32nd Floor
11/11/11	33rd Floor
11/11/11	34th Floor
11/11/11	35th Floor
11/11/11	36th Floor
11/11/11	37th Floor
11/11/11	38th Floor
11/11/11	39th Floor
11/11/11	40th Floor
11/11/11	41st Floor
11/11/11	42nd Floor
11/11/11	43rd Floor
11/11/11	44th Floor
11/11/11	45th Floor
11/11/11	46th Floor
11/11/11	47th Floor
11/11/11	48th Floor
11/11/11	49th Floor
11/11/11	50th Floor
11/11/11	51st Floor
11/11/11	52nd Floor
11/11/11	53rd Floor
11/11/11	54th Floor
11/11/11	55th Floor
11/11/11	56th Floor
11/11/11	57th Floor
11/11/11	58th Floor
11/11/11	59th Floor
11/11/11	60th Floor
11/11/11	61st Floor
11/11/11	62nd Floor
11/11/11	63rd Floor
11/11/11	64th Floor
11/11/11	65th Floor
11/11/11	66th Floor
11/11/11	67th Floor
11/11/11	68th Floor
11/11/11	69th Floor
11/11/11	70th Floor
11/11/11	71st Floor
11/11/11	72nd Floor
11/11/11	73rd Floor
11/11/11	74th Floor
11/11/11	75th Floor
11/11/11	76th Floor
11/11/11	77th Floor
11/11/11	78th Floor
11/11/11	79th Floor
11/11/11	80th Floor
11/11/11	81st Floor
11/11/11	82nd Floor
11/11/11	83rd Floor
11/11/11	84th Floor
11/11/11	85th Floor
11/11/11	86th Floor
11/11/11	87th Floor
11/11/11	88th Floor
11/11/11	89th Floor
11/11/11	90th Floor
11/11/11	91st Floor
11/11/11	92nd Floor
11/11/11	93rd Floor
11/11/11	94th Floor
11/11/11	95th Floor
11/11/11	96th Floor
11/11/11	97th Floor
11/11/11	98th Floor
11/11/11	99th Floor
11/11/11	100th Floor

NO.	DATE	BY	REV.
1	11/11/11	11/11/11	1
2	11/11/11	11/11/11	2
3	11/11/11	11/11/11	3
4	11/11/11	11/11/11	4

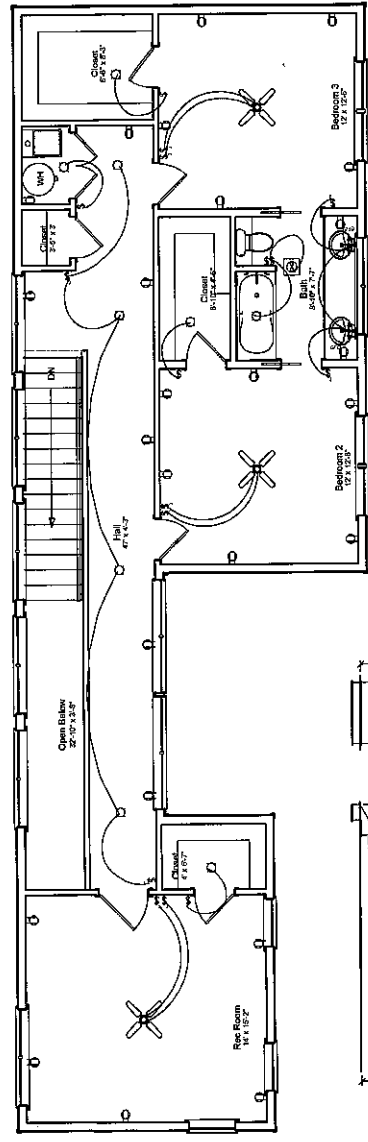
TITLE: PLAN 3266
 3 BDRM + OFFICE HOME
 1st FLOOR STUDY PLAN

PROJECT: "ROBERTS"
 Home

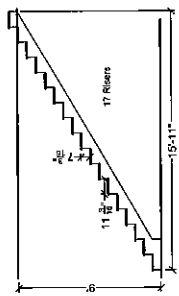
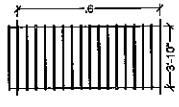
KB ENTERPRISE HOMES
 1534 E. 50th PL., E., U.S.A., TN., T.U.S.
 918.181.0400
 918.181.0400



2x6 Exterior Walls
 All Ceiling Heights 5'-0"
 Except Where Shown
 Living Area
 1081 sq ft



2x6 Exterior Walls
 All Ceiling Heights 5'-0"
 Except Where Shown
 Living Area
 1081 sq ft



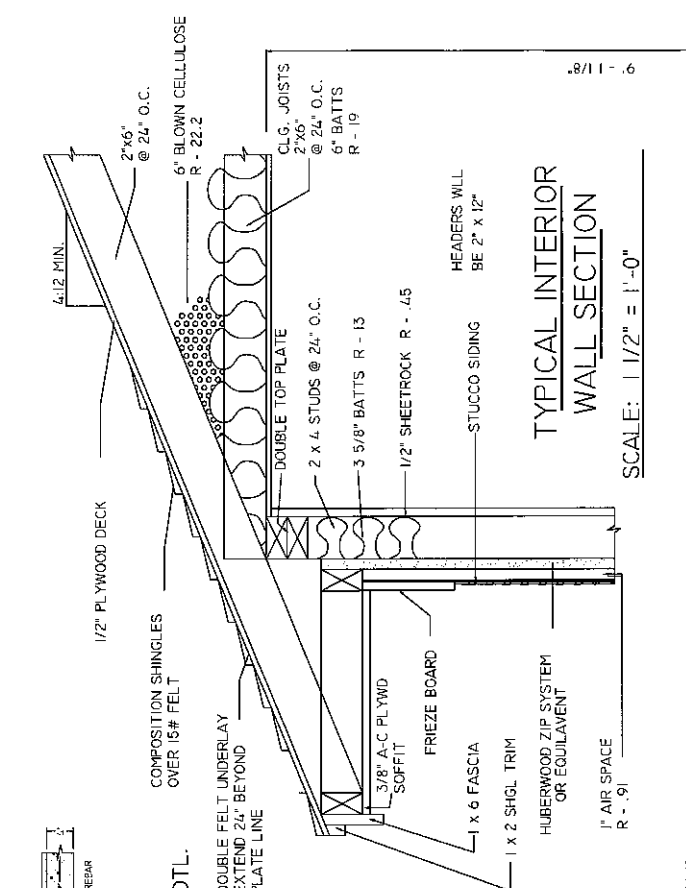
DATE	12/21/11
BY	5
PROJECT	KB Enterprise/Roberts/2286.dwg

SCALE	1/4"=10'
DATE	12/21/11
BY	5
PROJECT	KB Enterprise/Roberts/2286.dwg

TITLE
 PLAN 2286
 3 BDRM + OFFICE HOME
 2nd FLOOR PLANS

PROJECT
 "ROBERTS"
 Home

KB ENTERPRISE HOMES
 1834 E. 50th PLACE, TULSA, TN, 74134
 918.438.0900
 918.438.0900



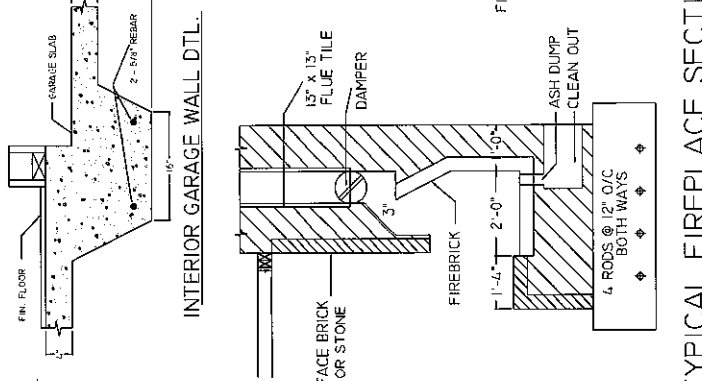
INTERIOR BEARING WALL DTL.

CONTRACTOR SHALL VERIFY ALL CONDITIONS AND DIMENSIONS AT THE JOB SITE AND NOTIFY THE DESIGNER OF ANY DIMENSIONAL ERRORS, OMISSIONS OR DISCREPANCIES BEFORE BEGINNING OR FABRICATING ANY WORK.

To the best of my knowledge these plans are drawn to comply with owner's and/or builder's specifications and any changes made on them after prints are made will be done at the owner's and/or builder's expense and responsibility. The contractor shall verify all dimensions and enclosed drawing. Creative Home Plans is not liable for errors once construction has begun. While every effort has been made in the preparation of this plan to avoid mistakes, the maker can not guarantee against human error. The contractor of the job must check all dimensions and other details prior to construction and be solely responsible thereafter.

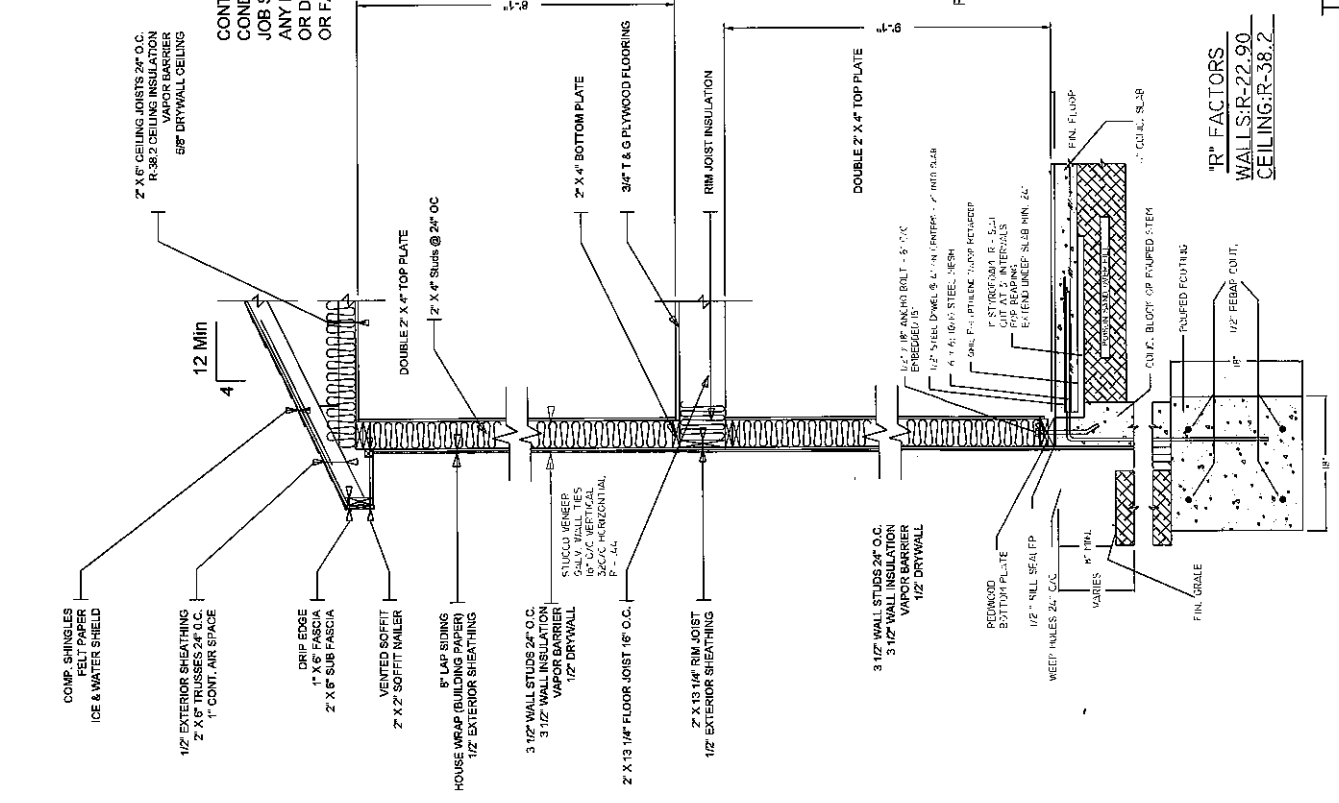
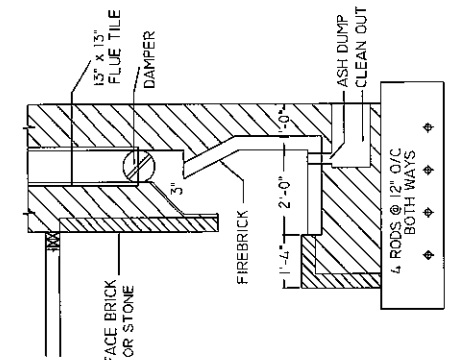
TYPICAL INTERIOR WALL SECTION

SCALE: 1 1/2" = 1'-0"



INTERIOR GARAGE WALL DTL.

TYPICAL FIREPLACE SECTION



"R" FACTORS
WALLS: R-22.90
CEILING: R-38.2

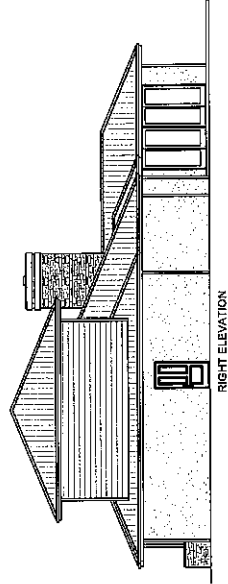
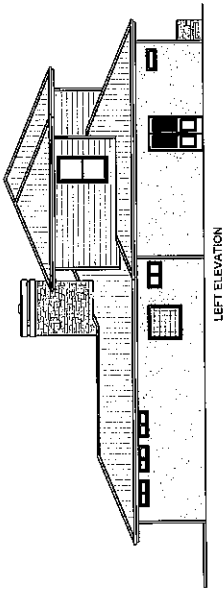
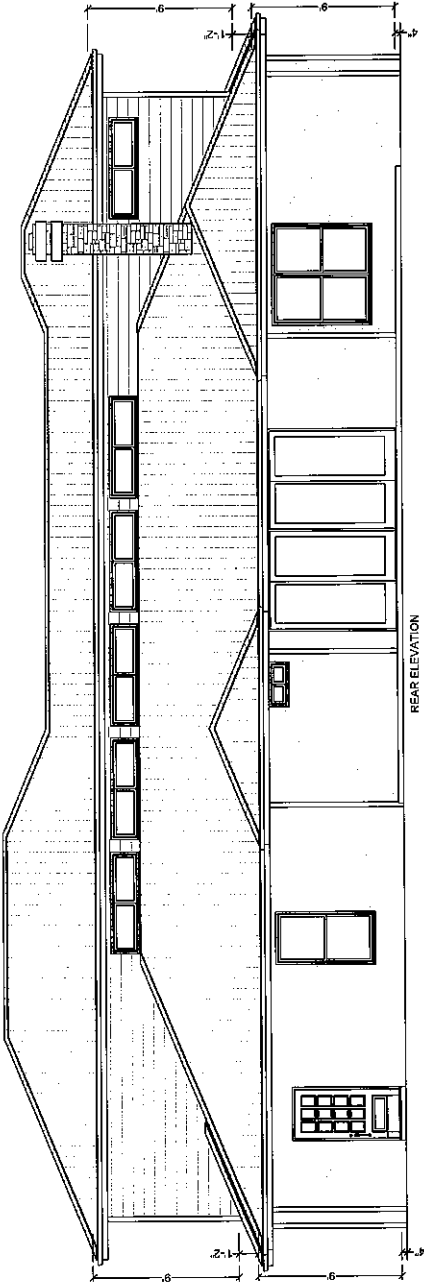
KB ENTERPRISE HOMES
18328 E. 50TH PLACE, TULSA, OK. 74134
(918) 481-0600
KBARTHUISA@GMAIL.COM

The "ROBERTS" Home

PLAN 3266
3 BDRM + OFFICE HOME
CONST. DETAIL SHEET

NAME: _____ DATE: _____
DRAWN BY: RAE 12-14-17
CHECKED BY: RFP 12-14-17
SCALE: 1/4" = 1'-0"

ACAD PATH: KB Enterprises\Roberts\3266.dwg
DRAWING NUMBER: **8**
SHEET NO. 2 OF 8 SHEETS



ROOF PITCH = 6:12



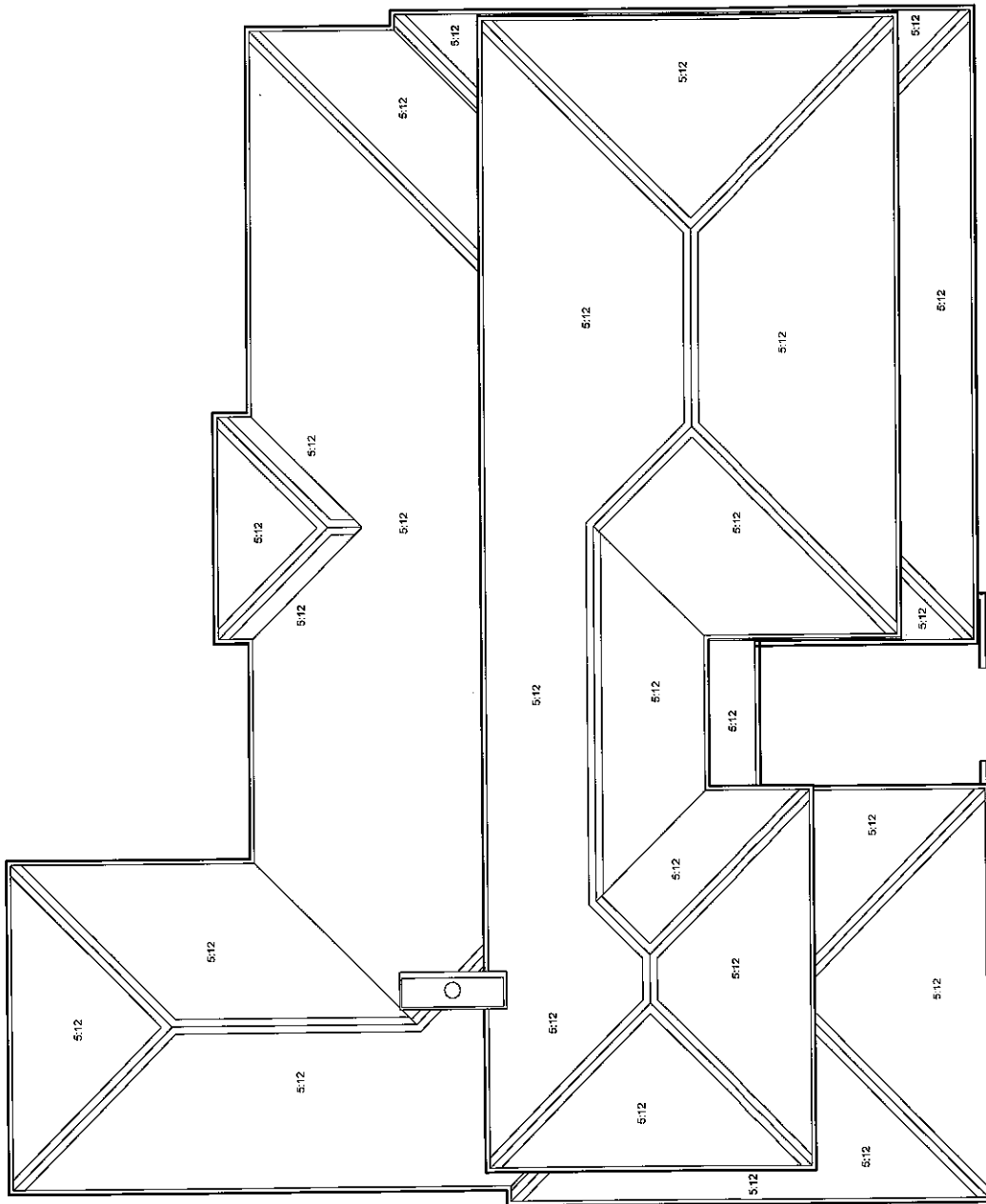
DATE	DATE	BY	DATE
12/21/17	12/21/17	1	12/21/17
12/21/17	12/21/17	1	12/21/17
12/21/17	12/21/17	1	12/21/17

SCALE	1/4" = 1'-0"
-------	--------------

TITLE PLAN 3266
3 BDRM + OFFICE HOME
EXTERIOR ELEVATIONS

PROJECT "The ROBERTS" Home

KB ENTERPRISE HOMES
1915 LAR 0000
1915 LAR 0000



ROOF PITCH = 5:12

DATE	12/20/11
BY	ARC
CHECKED	Enterprise/Roberts 3266.dwg
PROJECT NO.	7
SCALE	1/4" = 1'-0"

DATE	12/20/11
BY	ARC
CHECKED	Enterprise/Roberts 3266.dwg
PROJECT NO.	7
SCALE	1/4" = 1'-0"

TITLE
 PLAN 3266
 3 BDRM + OFFICE HOME
 ROOF PLAN

PROJECT
 The
 "ROBERTS"
 Home

KB ENTERPRISE HOMES
 1844 E. 55th PL., S.E., TULSA, OK 74104
 (918) 424-9600
 www.kbenterprisehomes.com