

*Prairie*

FIRE

NELSON  
STOWE  
DEVELOPMENT



ROSS GROUP

# ROCKFORD PARK APARTMENTS



CONNECTION TO  
FUTURE PARK

1501

SOUTH ROCKFORD AVE.

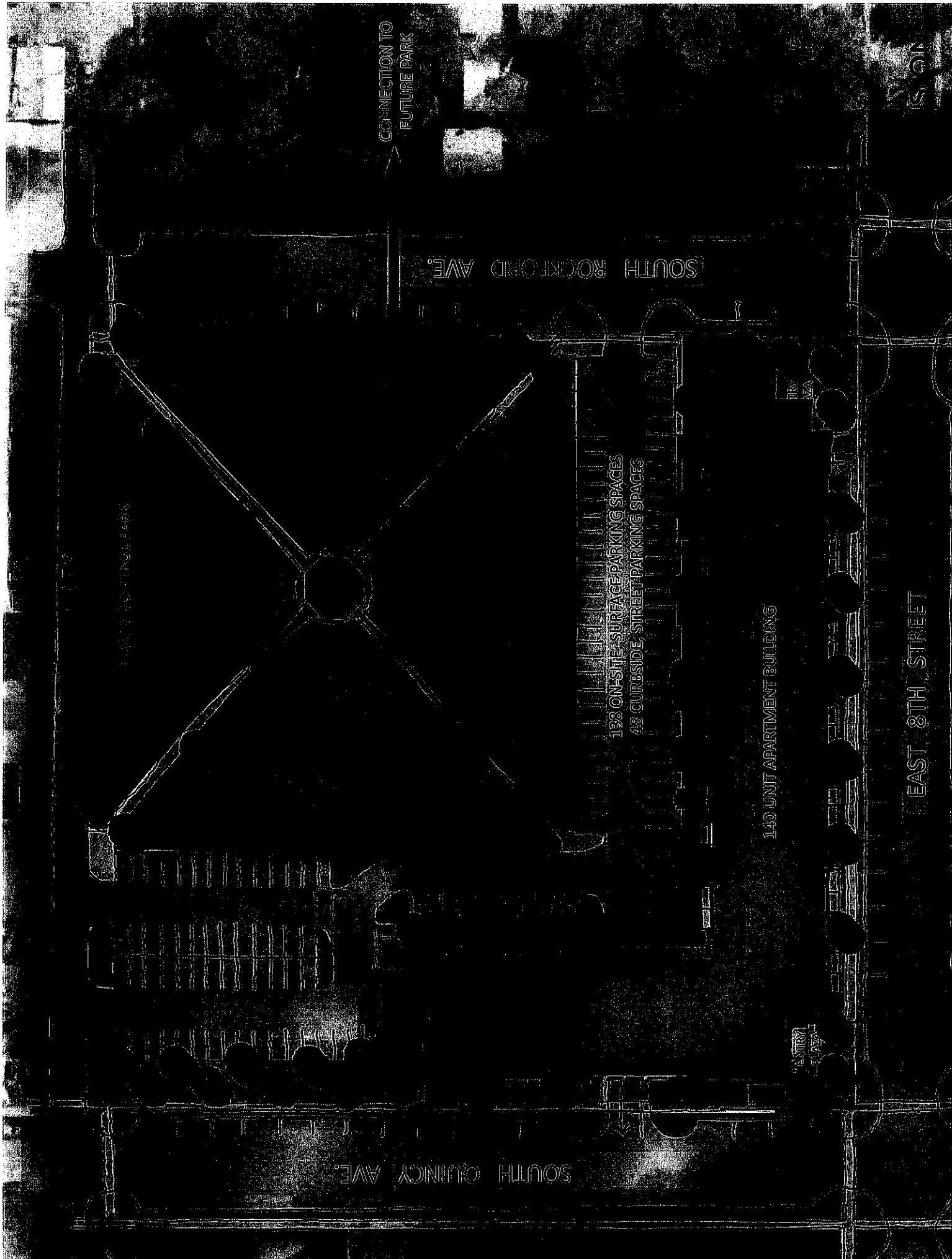
138 ON-SITE SURFACE PARKING SPACES  
48 CURBSIDE, STREET PARKING SPACES

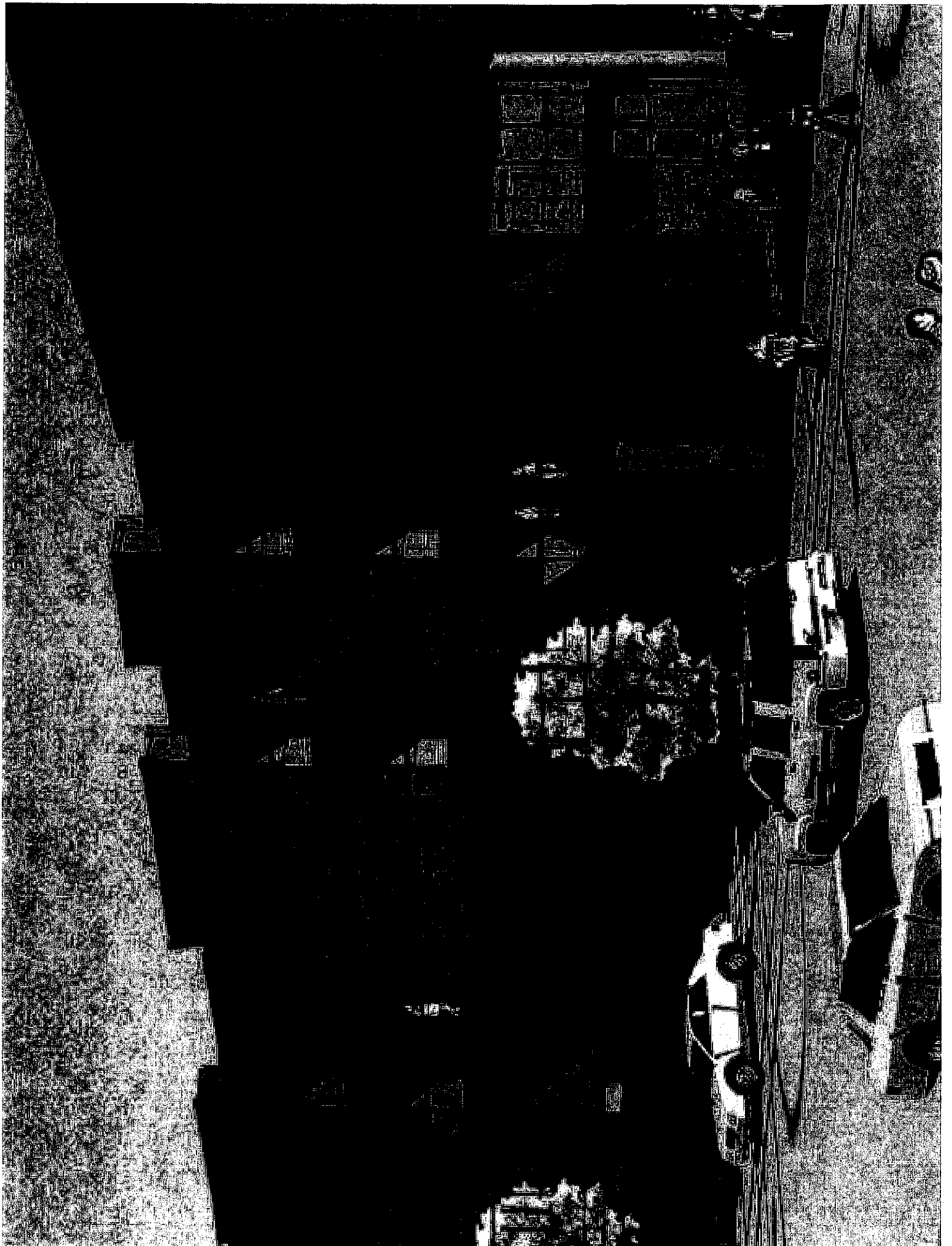
140 UNIT APARTMENT BUILDING

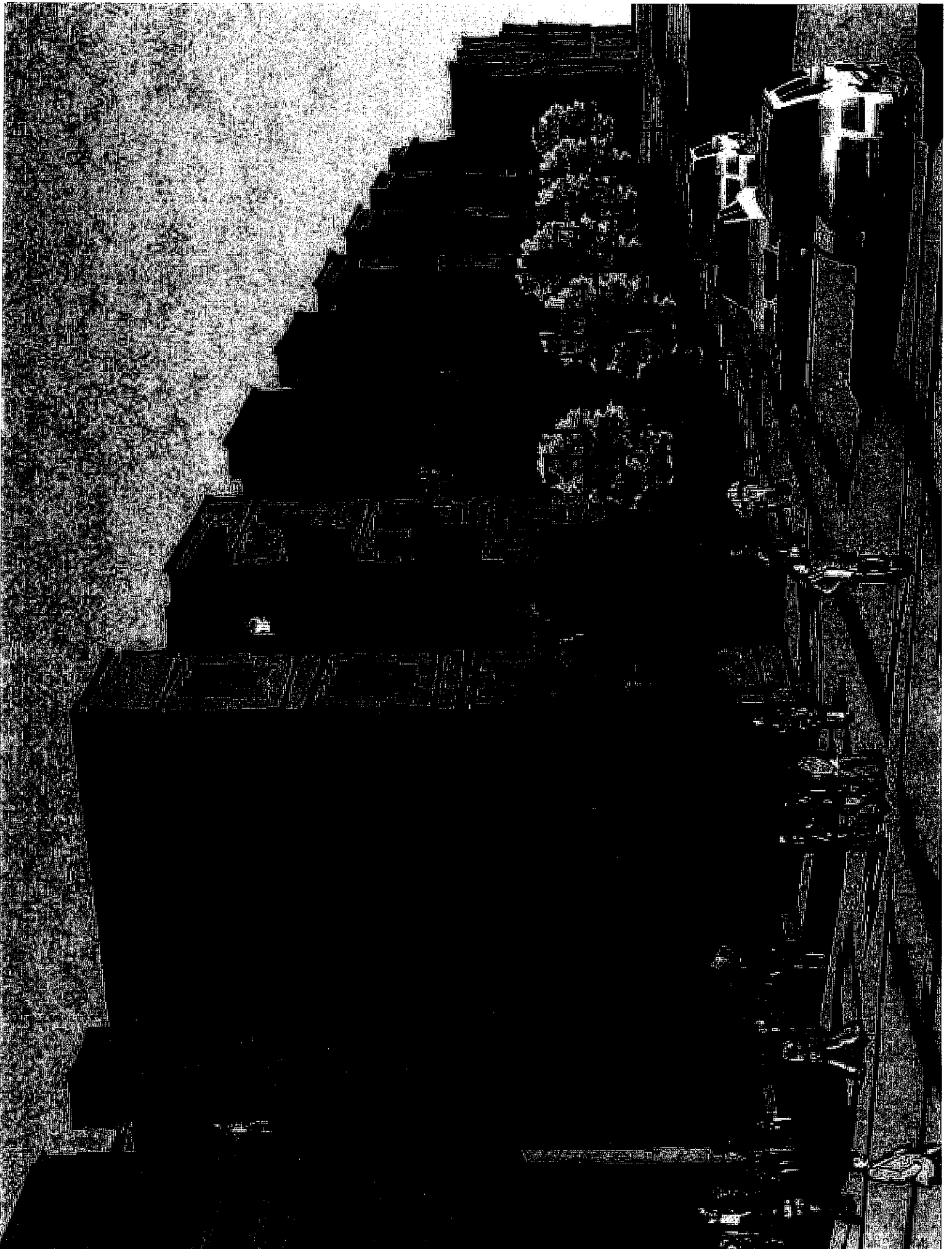
EAST 8TH STREET

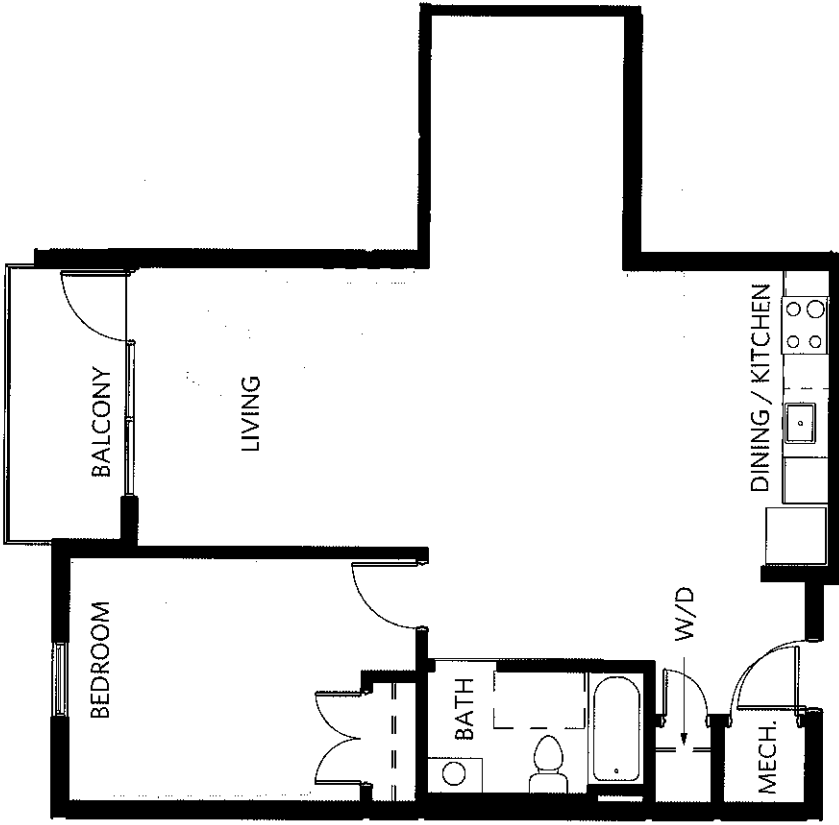
SOUTH QUINCY AVE.

ENTRY  
PLAZA

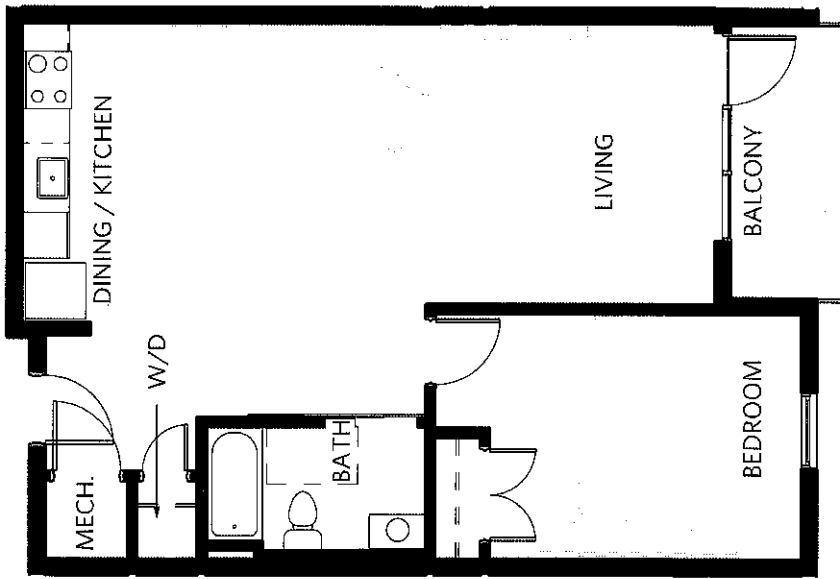




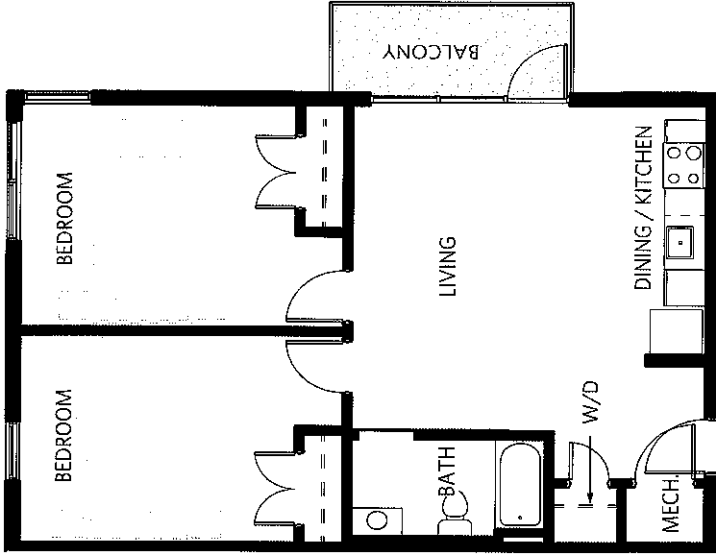




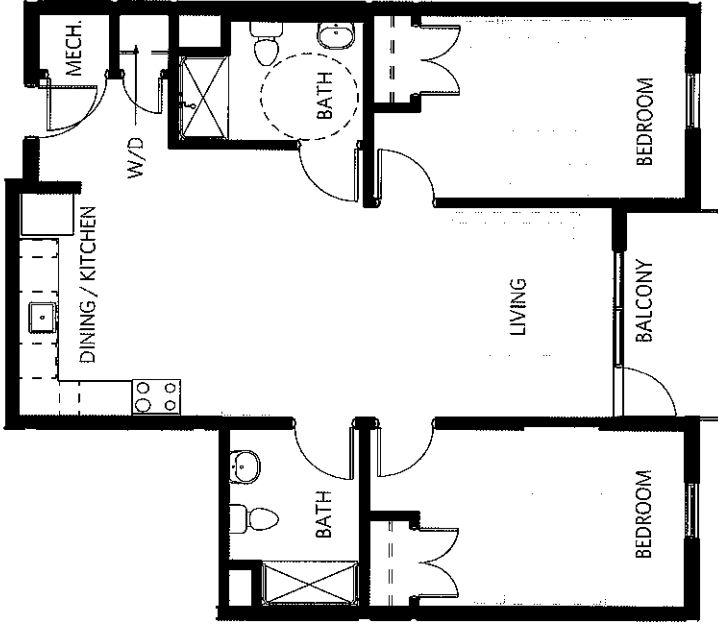
**TYPE 1B**  
1/8" = 1'-0" 805 SF



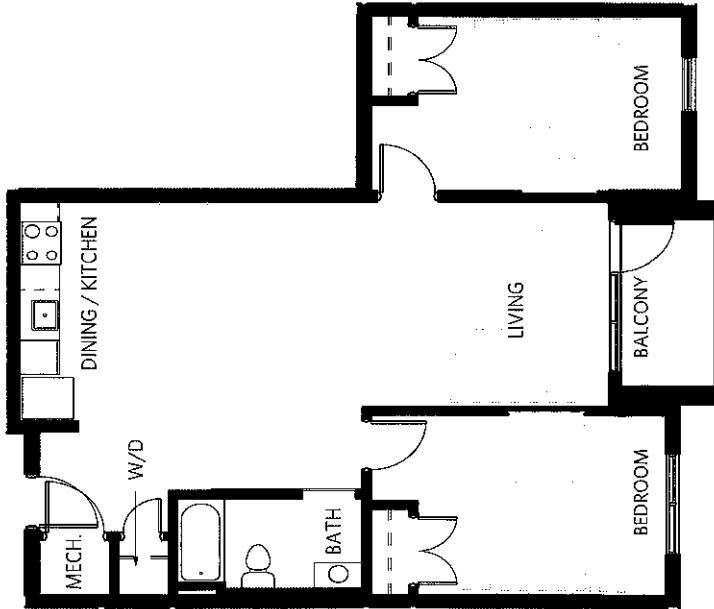
**TYPE 1**  
1/8" = 1'-0" 705 SF



**TYPE 2C**  
1/8" = 1'-0" 805 SF



**TYPE 2B**  
1/8" = 1'-0" 940 SF



**TYPE 2**  
1/8" = 1'-0" 875 SF

An aerial, high-angle photograph of a city skyline at night. The image is rendered in a high-contrast, black and white style with a heavy halftone or dithered texture. The city lights are visible as bright, irregular shapes against the dark background of the buildings and streets. The perspective is from directly above, looking down on the urban landscape.

Prairie Fire // Nelson+Stowe // Ross Group

**CONFIDENTIAL  
FINANCIAL  
INFORMATION  
REDACTED FROM  
RESPONSE TO REQUEST  
FOR PROPOSAL**